

Insert Probe

User Manual

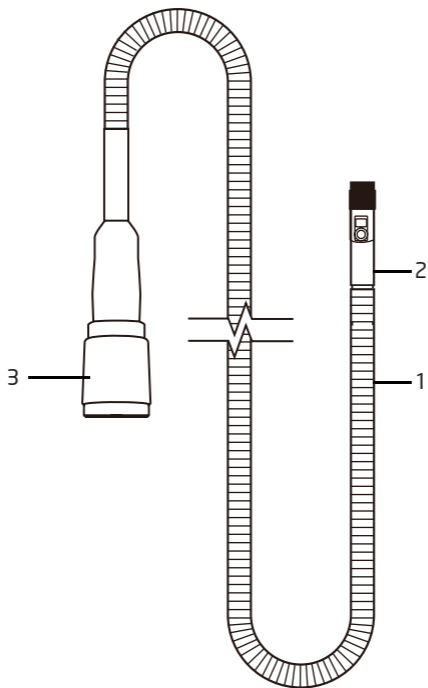


49HD-FS-1M-SR

Contents

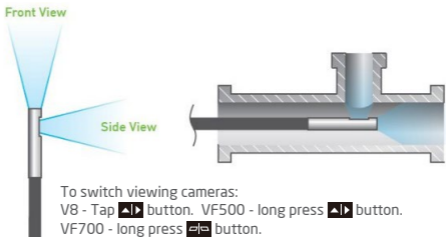
Product Outlook.....	2
Product Features.....	3
Getting Started.....	3
Specifications.....	4
Cautions for use.....	5

Product outlook



Product features

1. **Probe** - To guide camera head to inspection area.
2. **Camera Head** - Include front and side view camera/ LED sets.

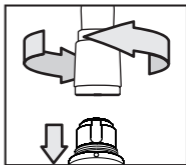


3. **Connector** - Connect to compatible monitor.

Getting started

Step1: Align the dot printed on the probe and the monitor's connector.

Step2: Carefully plug the probe into the monitor. Tighten the connecting collar to secure the probe connection.



Specifications

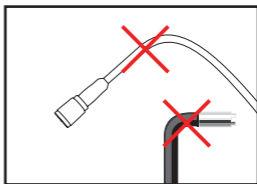
49HD-FS-1M-SR

Diameter	4.9mm
Length	1m
Direct of view	Front view 0° / Side view 90°
Illumination	Front/Side LEDs
FOV(Field of View)	90°
DOF(Depth of Field)	10mm~100mm
Articulation	N/A
Buttons	N/A
Material	Semi-rigid stainless steel
Liquid resistance	Unleaded gasoline, diesel, machine oil, brake oil, transmission oil, water
IP Rating	IP67
Working temp	-10°C~60°C
Storage temp	If the probe is kept for a long time (3 months or more), it is strongly recommended that the probe is preserved at dry and temperature appx. 20°C
Relative humidity	Max 95% non-condensing
Compatible monitor	V8 VF500 VF700

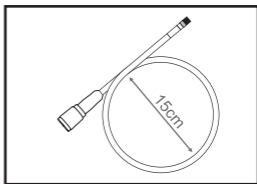
Cautions for Use

- To avoid danger, do not put the insert probe into any flammable liquid or gas.
- The insert probe contains a series of small wires that control the optics and electronics of the camera head. To ensure reliability, do not bend the insert probe more than 90°, and always keep the insert probe in an large arc as possible for storage.
- This product is designed for industrial use only. Do not use for human or any other biological inspection.
- Do not use any corrosive liquid for cleaning, such as alcohol.
- Do not try to disassemble the product, it might cause damage or electric shock .
- Please use only recommended components or accessories, unapproved accessories and components may cause damages.
- Avoid direct sun exposure and store the product in a cool, dry and well-ventilated place.
- In order to protect camera module, be sure to have a thread protective ring on the top of camera head if no accessories are used.

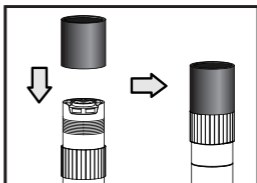
- Do not force or bend the probe end, it might affect the inspection even damage the probe.



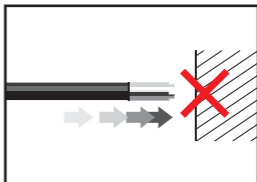
- Do not bundle the insert probe less than a 15cm internal diameter circle when using or storing.



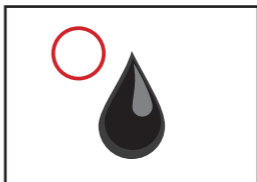
- Please recap and screw tight the protective ring while not in use.



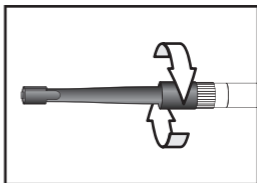
- DO NOT crash the camera head.



- Liquid immersion passed: unleaded gasoline, diesel, machine oil, brake oil, transmission oil, and water.



- Don't tight accessory too hard, just twist lightly until accessory is fixed.



- Use cleaning liquid and swab provided in the cleaning kit for camera head cleaning.

