

# M SERIES

Advanced thermal imaging camera with full function analysis



VISIT OUR WEBSITE

## Multiple Product Options

M series products provide wide-angle and manual focus options. The manual focus with a larger focal length option (without "W") is ideal for electrical, HVAC, and mechanical inspection where focusing on specific components is critical. The "W" series features a fixed focus wide FOV making them ideal for scanning walls, floors, and large-scale items.

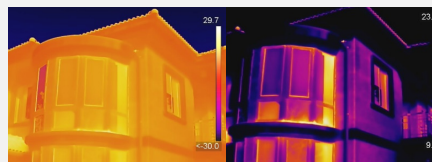


Without "W"

With "W"

## 1-Tap Level & Span

Quickly highlights the area of the image you are interested in by narrowing the span with one tap on the **3.5" LCD touchscreen**, instantly improving image contrast and highlighting potential problems.



Auto Level & Span

Manual / 1-Tap Level & Span

## Interchangeable Battery System

Includes **2 interchangeable Li-ion batteries** and a dual bay charger to provide you with **up to 12 hours** of operation. You can stay powered up for even the longest inspections.



2 interchangeable Li-ion batteries



## On-camera Analysis

Offers 17 measurement rules, 7 color alarm palettes and 4 image modes for powerful on-camera analysis.



## Camera Interface

Intuitive 3.5" LCD Touch Screen or interactive buttons to easily navigate to any function. Use either or both!



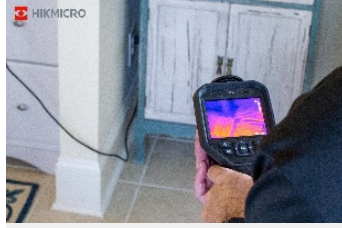
## Multiple Image Annotations

Leave text or audio annotations within the images instead of taking notes by hand, helping to improve inspection efficiency and productivity.

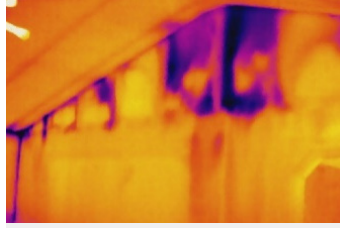
## APPLICATIONS



Check Electrical



Check Underfloor Heating



Check Building Insulation



Check Mechanical Status

## WHAT'S IN THE BOX



- Thermal Imager with Wrist Strap
- Interchangeable and Rechargeable Li-ion Batteries (x2)
- Power Supply for Battery Charger
- Two-bay Battery Charger
- International Use Plugs (US/EU/UK/AU) for Power Supply (x4)
- USB 2.0 A to USB Type-C Cable
- Hard Carrying Case
- Calibration Certificate / Quick Start Guide
- 16GB Micro SD card(M10/M20/M20W) / 64GB Micro SD card(M30)

## OPTIONAL ACCESSORIES



– Additional batteries –  
E097-13-1S1P26650



– Pouch –  
HM-SP01-POUCH



– Replacement Charger –  
HM-5202ZC

Model No		M11W	M11	M20W	M20	M30	
Infrared Image	IR Resolution	192 × 144 (27,648 pixels)			256 × 192 (49, 152 pixels)		384 × 288 (110,592 pixels)
	NETD	< 40 mK (@ 25 °C, F#=1.0)					< 35 mK (@ 25 °C, F#=1.0)
	Image Frequency	25 Hz					
	Field of View (FOV)	37.5° × 27.9°	18.75° × 14.1°	50° × 37.2°	25° × 18.8°	37.5° × 28.5°	
	Minimum Focus Distance	0.5 m (1.64 ft)	0.1 m (0.33 ft)	0.5 m (1.64 ft)	0.1 m (0.33 ft)	0.2 m (0.65 ft)	
	Focus Mode	Focus Free	Manual Focus	Focus Free	Manual Focus	Manual Focus	
Image Display	Visual Camera	3264 × 2448 (8 MP)					
Measurement and Analysis	Object Temperature Range	-20 °C to 550 °C (-4 °F to 1022 °F)					
	Accuracy	Max (±2°C/3.6°F, ±2%), for the ambient temp. 15°C to 35 °C (59 °F to 95 °F) and object temp. above 0 °C (32°F)					
General	Wi-Fi	802.11 b/g/n (2.4 GHz and 5 GHz)					
	Battery Operating Time	Approx. 6 hours	Approx. 6 hours	Approx. 6 hours	Approx. 6 hours	Approx. 4 hours	