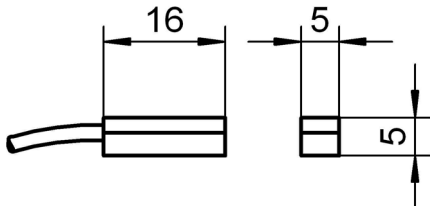
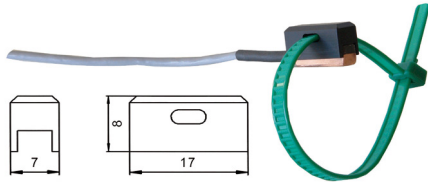


# Temperature

## Pt100 sensor FPA 611 x



For surface measurement



Meas. element: Pt100, class B \*  
 Measuring tip: Operative range see below  
 Copper, level

**new** Improved thermal transfer thanks to innovative sensor element and new contact technology

$T_{90}^*$ : 20 s

Cable: see below

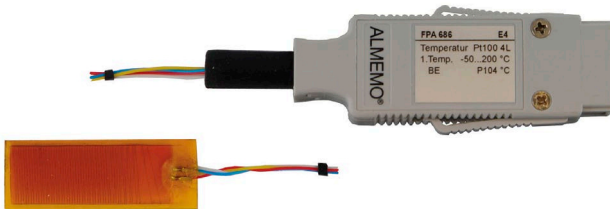
Surface sensor  
 -10...+90°C, Cable PVC, 2 m **Order no. FPA611**

-10...+110°C, Cable, PFA, 3m for more demanding mechanical stress ALMEMO® connector, resolution 0.01 K  
**Order no. FPA611S01**

Accessories  
 Fixture for fastening with cable ties

**Best-Nr. ZB9611RM**

## Pt100 film sensor FPA 686



For surface measurement

Meas. element: Pt100, class B\*, gewickelt  
 Messfläche: Operative range -50...+200 °C,  
 temperature-resistant foil,  
 15 x 40 mm, approx. 0.5 mm thick

$T_{90}^*$ : 2 s

Cable: Stranded wire PFA, 4-wire twisted

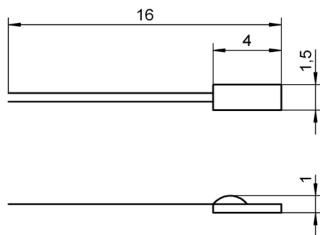
Length 2 m

**Order no. FPA686**

Length 10 m

**Order no. FPA686L10**

## Pt100 ceramic chip sensor element FP 0802



Unprotected sensor element for constructing your own sensors

Meas. element: Pt100, Class B \*

Measuring tip: Operative range -40...+400 °C  
 Ceramic chip sensor

Connection wires: 10 mm, bare

Ceramic chip sensor

**Order no. FP0802**

\* For general technical data, see page 07.03

DAkkS or factory calibration KT90xx temperature for sensor or measuring chain (sensor + device) (see chapter Calibration certificates)  
 DAkkS calibration meets all the requirements regarding test resources laid down in DIN EN ISO/IEC 17025.