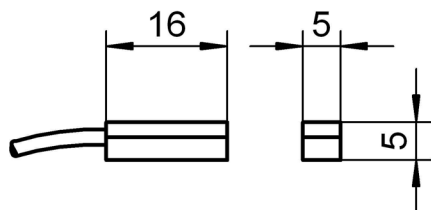


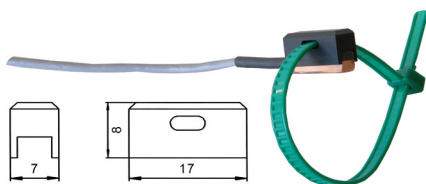
NTC sensor FNA 611



For surface measurement

Meas. element: NTC *
 Measuring tip: Operative range -10...+90 °C
 Copper, level
 T_{90} : * 20 s
 Cable: 2 m PVC

Surface sensor **Order no. FNA611**



Accessories
 Fixture for fastening
 with cable ties

Best-Nr. ZB9611RM

NTC sensor FN 0001 K



Unprotected sensor element with cable



Meas. element: NTC*
 Measuring tip: Sensor element, unprotected
 Operative range: -20...+100°C
 Connection wires: appr. 180 mm, fluoropolymer insulation
 Connecting cable: 2 meters, PVC, thin stranded pick-up
 wire, Operative range -10 to +90 °C
 Cable juncture, in shrink-fit

NTC sensor with cable,
 free ends

Order no. FN0001K

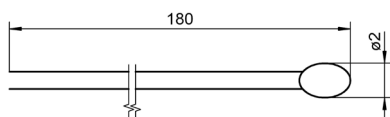
Option:

ALMEMO® connector including assembly

Single connectors for 1 sensor Order no. OT9040AS

Double connector for 2 sensors Order no. OT9040AS2

NTC sensor element FN 0001



Unprotected sensor element for constructing your own sensors

Meas. element: NTC *
 Measuring tip: Operative range -20...+100 °C
 Sensor
 Connection wires 180 mm, fluoropolymer insulation

Sensor **Order no. FN0001**

* For general technical data, see page 07.03

DAkKS or factory calibration KT90xx temperature for sensor or measuring chain (sensor + device) (see chapter Calibration certificates)
 DAkKS calibration meets all the requirements regarding test resources laid down in DIN EN ISO/IEC 17025.